



2014 LED Products

Table of Contents

Corn Lamps pg3

Floods pg8

High Bays pg21

T5-T8 Tubes pg29

Walk Packs pg42

Low Bays pg45

GU10 pg49

MR16 pg52

GU24 pg54

Canopys pg55

Parking Garage pg58

Parking / Street pg62

Shoe Boxes pg70

Par 20 pg74

Par 30 pg77

Par 38 pg79

House Holds pg82

R-20 pg87

R-30 pg89

1. Requested changes to fixtures will be a special order only.
2. Prices are subject to change without notice.



Corn Cob Lamp Products



Model :EA-SLS-SMD-CC-30W-K

Description: Corn Cob Lamp

Wattage- 30-Watts

Lumens-3600

CRI-80

Power Factor-95

Beam Angle-360 deg

Lamp Life-30,000 Hours

Heat Sink-Aluminum

Device Cover-Plastic

Socket-E26/E27/E39/E40

Support-Socket

LED-SMD

VAC Rating-90AC/265AC

Kelvin Range-3000K/5000K

Weight-0.42-kg

Dimension-D-90mm/L-204mm

IP Rating-IP40

Certifications-ETL/CE/ROHS/PSE

IES Files-No

Warranty-3 Years

MSRP: \$225.00



EA LED LIGHTING PRODUCTS
709 Frank Street
Hewitt, Texas 76643
V:254-772-8200 F:254-772-8206



Model :EA-SLS-SMD-CC-40W-K

Description: Corn Cob Lamp

Wattage- 40-Watts

Lumens-4800

CRI-80

Power Factor-95

Beam Angle-360 deg

Lamp Life-30,000 Hours

Heat Sink-Aluminum

Device Cover-Plastic

Socket-E26/E27/E39/E40

Support-Socket

LED-SMD

VAC Rating-90AC/265AC

Kelvin Range-3000K/5000K

Weight-0.50kg

Dimension-D-90mm/L-235mm

IP Rating-IP40

Certifications-ETL/CE/ROHS/PSE

IES Files-No

Warranty-3 Years

MSRP: \$300.00



EA LED LIGHTING PRODUCTS
709 Frank Street
Hewitt, Texas 76643
V:254-772-8200 F:254-772-8206



Model :EA-LS-SMD-CC-50W-K

Description: Corn Cob Lamp

Wattage- 50-Watts

Lumens-6000

CRI-80

Power Factor-95

Beam Angle-360 deg

Lamp Life-30,000 Hours

Heat Sink-Aluminum

Device Cover-Plastic

Socket-E26/E27/E39/E40

Support-Socket

LED-SMD

VAC Rating-90AC/265AC

Kelvin Range-3000K/5000K

Weight-0.52kg

Dimension-D-90mm/L-260mm

IP Rating-IP40

Certifications-ETL/CE/ROHS/PSE

Lighting Facts-No

Warranty-3 Years

MSRP: \$375.00





Model :EA-LS-SMD-CC-60W-K

Description: Corn Cob Lamp

Wattage- 60-Watts

Lumens-7200

CRI-80

Power Factor-95

Beam Angle-360 deg

Lamp Life-30,000 Hours

Heat Sink-Aluminum

Device Cover-Plastic

Socket-E26/E27/E39/E40

Support-Socket

LED-SMD

VAC Rating-90AC/265AC

Kelvin Range-3000K/5000K

Weight-0.56kg

Dimension-D-90mm/L-280mm

IP Rating-IP40

Certifications-ETL/CE/ROHS/PSE

IES Files-No

Warranty-3 Years

MSRP: \$450.00





Flood Light Products



Model :EA-LS-COB-FL-10W-K

Description: Flood Light

Wattage- 10-Watts

Lumens-800

CRI-80

Power Factor-95

Beam Angle-130 deg

Lamp Life-30,000 hour

Heat Sink-Alm

Device Cover-Plastic

Socket-Cable

Support-Bracket

LED-COB

VAC Rating-90AC/277AC

Kelvin Range-3000K/5000K

Weight-1kg

Dimension-114/86/105mm

IP Rating-IP65

Certifications-DLC/ETL/CE/ROHS/PSE

IES Files-No

Warranty-3 Years

MSRP: \$57.00





Model :EA-LS-COB-FL-20W-K

Description: Flood Light

Wattage- 20-Watts

Lumens-1992

CRI-80

Power Factor-95

Beam Angle-130 deg

Lamp Life-30,000 Hours

Heat Sink-Aluminum

Device Cover-Plastic

Socket-Cable

Support-Bracket

LED-COB

VAC Rating-90AC/277AC

Kelvin Range-3000K/5000K

Weight-2kg

Dimension-180/140/110mm

IP Rating-IP65

Certifications-DLC/ETL/CE/ROHS/PSE

IES Files-No

Warranty-3 Years

MSRP: \$105.00



EA LED LIGHTING PRODUCTS
709 Frank Street
Hewitt, Texas 76643
V:254-772-8200 F:254-772-8206



Model :EA-LS-COB-FL-30W-K

Description: Flood Light

Wattage- 30-Watts

Lumens-2670

CRI-80

Power Factor-95

Beam Angle-130 deg

Lamp Life-30,000 Hours

Heat Sink-Aluminum

Device Cover-Plastic

Socket-Cable

Support-Bracket

LED-COB

VAC Rating-90AC/277AC

Kelvin Range-3000K/5000K

Weight-3kg

Dimension-224/184/135mm

IP Rating-IP65

Certifications-DLC/ETL/CE/ROHS/PSE

IES Files-No

Warranty-3 Years

MSRP: \$189.00



EA LED LIGHTING PRODUCTS
709 Frank Street
Hewitt, Texas 76643
V:254-772-8200 F:254-772-8206



Model :EA-LS-COB-FL-40W-K

Description: Flood Light

Wattage- 40-Watts

Lumens-3200

CRI-80

Power Factor-95

Beam Angle-130 deg

Lamp Life-30,000 Hours

Heat Sink-Aluminum

Device Cover-Plastic

Socket-Cable

Support-Bracket

LED-COB

VAC Rating-90AC/277AC Kelvin

Range-3000K/5000K Weight-3kg

Dimension-290/183/236

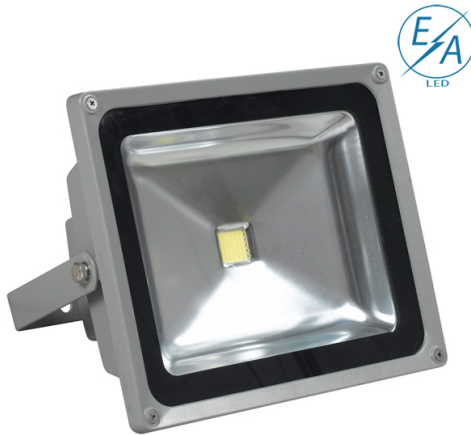
IP Rating-IP65

Certifications-ETL/CE/ROHS/PSE

IES Files-No

Warranty-3 Years

MSRP: \$204.00





Model :EA-LS-COB-FL-50W-K

Description: Flood Light

Wattage- 50-Watts

Lumens-4300

CRI-80

Power Factor-130

Beam Angle-90-deg

Lamp Life-30,000 Hours

Heat Sink-Aluminum

Device Cover-Plastic

Socket-Cable

Support-Bracket

LED-COB

VAC Rating-90AC/277AC

Kelvin Range-3000K/5000K

Weight-3kg

Dimension-288/183/238

IP Rating-IP65

Certifications-DLC/ETL/CE/ROHS/PSE

IES Files-No

Warranty-3 Years

MSRP: \$234.00



EA LED LIGHTING PRODUCTS
709 Frank Street
Hewitt, Texas 76643
V:254-772-8200 F:254-772-8206



Model :EA-LS-COB-FL-60W-K

Description: Flood Light

Wattage-60-Watts

Lumens-4800

CRI-80

Power Factor-130

Beam Angle-90 deg

Lamp Life-30,000 Hours

Heat Sink-Aluminum

Device Cover-Plastic

Socket-Cable

Support-Bracket

LED-COB

VAC Rating-90AC/277AC

Kelvin Range-3000K/5000K

Weight-3kg

Dimension-360/285/110mm

IP Rating-IP65

Certifications-ETL/CE/ROHS/PSE

IES Files-No

Warranty-3 Years

MSRP: \$279.00





Model :EA-LS-COB-FL-70W-K

Description: Flood Light

Wattage- 70-Watts

Lumens-5600

CRI-80

Power Factor-130

Beam Angle-Degrees

Lamp Life-30,000 Hours

Heat Sink-Aluminum

Device Cover-Plastic

Socket-Cable

Support-Bracket

LED-COB

VAC Rating-90AC/277AC

Kelvin Range-3000K/5000K

Weight-3kg

Dimension-360/280/110mm

IP Rating-IP65

Certifications-DLC/ETL/CE/ROHS/PSE

IES Files-No

Warranty-3 Years

MSRP: \$345.00



EA LED LIGHTING PRODUCTS
709 Frank Street
Hewitt, Texas 76643
V:254-772-8200 F:254-772-8206



Model :EA-LS-COB-FL-80W-K

Description: Flood Light

Wattage- 80-Watts

Lumens-6400

CRI-80

Power Factor-130

Beam Angle-90 deg

Lamp Life-30,000 Hours

Heat Sink-Aluminum

Device Cover-Plastic

Socket-Cable

Support-Bracket

LED-COB

VAC Rating-90AC/277AC

Kelvin Range-3000K/5000K

Weight-7kg

Dimension-mm

IP Rating-IP65

Certifications-ETL/CE/ROHS/PSE

IES Files-No

Warranty-3 Years

MSRP: \$384.00



EA LED LIGHTING PRODUCTS
709 Frank Street
Hewitt, Texas 76643
V:254-772-8200 F:254-772-8206



Model :EA-LS-COB-FL-100W-K

Description: Flood Light

Wattage-100-Watts

Lumens-10,000

CRI-80

Power Factor-130

Beam Angle-90-deg

Lamp Life-30,000 Hours

Heat Sink-Aluminum

Device Cover-Plastic

Socket-Cable

Support-Bracket

LED-COB

VAC Rating-90AC/277AC

Kelvin Range-3000K/5000K

Weight-7kg

Dimension-330/404/120mm

IP Rating-IP65

Certifications-DLC/ETL/CE/ROHS/PSE

IES Files-No

Warranty-3 Years

MSRP: \$408.00



EA LED LIGHTING PRODUCTS
709 Frank Street
Hewitt, Texas 76643
V:254-772-8200 F:254-772-8206



Model :EA-LS-COB-FL-120W-K

Description: Flood Light

Wattage- 120-Watts

Lumens-10,214

CRI-80

Power Factor-90

Beam Angle-130 deg

Lamp Life-30,000 Hours

Heat Sink-Aluminum

Device Cover-Plastic

Socket-Cable

Support-Bracket

LED-COB

VAC Rating-90AC/277AC

Kelvin Range-3000K/5000K

Weight-9kg

Dimension-425/325/200mm

IP Rating-IP65

Certifications-DLC/ETL/CE/ROHS/PSE

IES Files-No

Warranty-3 Years

MSRP: \$627.00



EA LED LIGHTING PRODUCTS
709 Frank Street
Hewitt, Texas 76643
V:254-772-8200 F:254-772-8206



Model :EA-LS-COB-FL-150W-K

Description: Flood Light

Wattage- 150-Watts

Lumens-12,768

CRI-80

Power Factor-90

Beam Angle-130 deg

Lamp Life-30,000 Hours

Heat Sink-Aluminum

Device Cover-Plastic

Socket-Cable

Support-Bracket

LED-COB

VAC Rating-90AC/277AC

Kelvin Range-3000K/5000K

Weight-9kg

Dimension-425/325/200mm

IP Rating-IP65

Certifications-DLC/ETL/CE/ROHS/PSE

IES Files-No

Warranty-3 Years

MSRP: \$657.00





Model :EA-LS-COB-FL-200W-K

Description: Flood Light

Wattage- 200-Watts

Lumens-16,763

CRI-80

Power Factor-95

Beam Angle-130 deg

Lamp Life-30,000 Hours

Heat Sink-Aluminum

Device Cover-Plastic

Socket-Cable

Support-Bracket

LED-COB

VAC Rating-90AC/277AC

Kelvin Range-3000K/5000K

Weight-15kg

Dimension-340/395/187mm

IP Rating-IP65

Certifications-DLC/ETL/CE/ROHS/PSE

IES Files-No

Warranty-3 Years

MSRP: \$804.00



EA LED LIGHTING PRODUCTS
709 Frank Street
Hewitt, Texas 76643
V:254-772-8200 F:254-772-8206



High Bay Products



Model :EA-LS-COB-HHB-100W-K

Description: High Bay

Wattage- 100-Watts

Lumens-8000

CRI-80

Power Factor-95

Beam Angle-130 deg

Lamp Life-30,000 Hours

Heat Sink-Aluminum

Device Cover-Plastic

Socket-Cable

Support-Eye Bolt

LED-COB

VAC Rating-90AC/277AC

Kelvin Range-3000K/5000K

Weight-kg

Dimension-500/487mm

IP Rating-IP65

Certifications-ETL/CE/ROHS/PSE

IES Files-No

Warranty-3 Year

MSRP: \$426.00





Model :EA-LS-COB-HHB-120W-K

Description: High Bay

Wattage- 120-Watts

Lumens-10,800

CRI-80

Power Factor-95

Beam Angle-130 deg

Lamp Life-30,000 Hours

Heat Sink-Aluminum

Device Cover-Plastic

Socket-Cable

Support-Eye Bolt

LED-COB

VAC Rating-90AC/277AC

Kelvin Range-3000K/5000K

Weight-kg

Dimension-500/487mm

IP Rating-IP65

Certifications-ETL/CE/ROHS/PSE

IES Files-No

Warranty-3 Years

MSRP: \$537.00





Model :EA-LS-COB-HHB-150W-K

Description: High Bay

Wattage- 150-Watts

Lumens-13,500

CRI-80

Power Factor-95

Beam Angle-Degrees

Lamp Life-30,000 Hours

Heat Sink-Aluminum

Device Cover-Plastic

Socket-Cable

Support-Eye Bolt

LED-COB

VAC Rating-90AC/277AC

Kelvin Range-3000K/5000K

Weight-kg

Dimension-500/492mm

IP Rating-IP65

Certifications-ETL/CE/ROHS/PSE

IES Files-No

Warranty-3 Years

MSRP: \$648.00





Model :EA-LS-COB-HHB-200W-K

Description: High Bay

Wattage- 200-Watts

Lumens-18,800

CRI-80

Power Factor-90

Beam Angle-Degrees

Lamp Life-30,000 Hours

Heat Sink-Aluminum

Device Cover-Plastic

Socket-Cable

Support-Eye Bolt

LED-COB

VAC Rating-90AC/277AC

Kelvin Range-3000K/5000K

Weight-kg

Dimension-mm

IP Rating-IP65

Certifications-ETL/CE/ROHS/PSE

IES Files-No

Warranty-3 Year

MSRP: \$903.00



EA LED LIGHTING PRODUCTS
709 Frank Street
Hewitt, Texas 76643
V:254-772-8200 F:254-772-8206



Model :EA-LS-SMD-FLHB-400W-K

Description: Flood / High Bay

Wattage- 400-Watts

Lumens-36,000

CRI-80

Power Factor-95

Beam Angle- Degrees

Lamp Life-30,000 Hours

Heat Sink-Aluminum

Device Cover-Plastic

Socket-Cable

Support-Eye Bolt / Bracket

LED-SM

VAC Rating-90AC/277AC

Kelvin Range-3000K/5000K

Weight-kg

Dimension-mm

IP Rating-IP65

Certifications-ETL/CE/ROHS/PSE

IES Files-No

Warranty-3 Years

MSRP: \$1,368.00



EA LED LIGHTING PRODUCTS
709 Frank Street
Hewitt, Texas 76643
V:254-772-8200 F:254-772-8206



Model :EA-LS-SMD-FLHB-500W-K

Description: Flood / High Bay

Wattage- 500-Watts

Lumens-45,000

CRI-80

Power Factor-95

Beam Angle- Degrees

Lamp Life-30,000 Hours

Heat Sink-Aluminum

Device Cover-Plastic

Socket-Cable

Support-Eye Bolt / Bracket

LED-SM

VAC Rating-90AC/277AC

Kelvin Range-3000K/5000K

Weight-kg

Dimension-mm

IP Rating-IP65

Certifications-ETL/CE/ROHS/PSE

IES Files-No

Warranty-3 Years

MSRP: \$1,710.00



EA LED LIGHTING PRODUCTS
709 Frank Street
Hewitt, Texas 76643
V:254-772-8200 F:254-772-8206



Model :EA-LS-SMD-FLHB-600W-K

Description: Flood / High Bay

Wattage- 600 Watts

Lumens-54,000

CRI-80

Power Factor-95

Beam Angle-Degrees

Lamp Life-30,000 Hours

Heat Sink-Aluminum

Device Cover-Plastic

Socket-Cable

Support-Eye Bolt / Bracket

LED-SMD

VAC Rating-90AC/277AC

Kelvin Range-3000K/5000K

Weight-kg

Dimension-mm

IP Rating-IP65

Certifications-ETL/CE/ROHS/PSE

IES Files-No

Warranty-3 Years

MSRP: \$2,055.00



EA LED LIGHTING PRODUCTS
709 Frank Street
Hewitt, Texas 76643
V:254-772-8200 F:254-772-8206



Tube Products



Model :EA-LS-SMD2-T8-10W-2-K

Description: 2'-T8-Tube

Wattage- 10 Watts

Lumens-900

CRI-80

Power Factor-95

Beam Angle-120 deg

Lamp Life-30,000 Hours

Heat Sink-Aluminum

Device Cover-Plastic

Socket-G13

Support-Socket

LED-SMD

VAC Rating-90AC/277AC

Kelvin Range-3000K/5000K

Weight-kg

Dimension-600mm

IP Rating-IP40

Certifications-ETL/CE/ROHS/PSE

IES Files-No

Warranty-3 Years

MSRP: \$42.90



EA LED LIGHTING PRODUCTS
 709 Frank Street
 Hewitt, Texas 76643
 V:254-772-8200 F:254-772-8206



Model :EA-LS-SMD2-T8-14W-3-K

Description: 3'-T8-Tube

Wattage- 14 Watts

Lumens-1260

CRI-80

Power Factor-95

Beam Angle-120 deg

Lamp Life-30,000 Hours

Heat Sink-Aluminum

Device Cover-Plastic

Socket-G13

Support-Socket

LED-SMD

VAC Rating-90AC/277AC

Kelvin Range-3000K/5000K

Weight-kg

Dimension-900 mm

IP Rating-IP40

Certifications-ETL/CE/ROHS/PSE

IES Files-No

Warranty-3 Year

MSRP: \$49.50



EA LED LIGHTING PRODUCTS
 709 Frank Street
 Hewitt, Texas 76643
 V:254-772-8200 F:254-772-8206



Model :EA-LS-SMD2-T8-18W-4-K

Description: 4'-T8-Tube

Wattage-18-Watts

Lumens-2100

CRI-80

Power Factor-95

Beam Angle-120 deg

Lamp Life-30,000 Hours

Heat Sink-Aluminum

Device Cover-Plastic

Socket-G13

Support-Socket

LED-SMD

VAC Rating-90AC/277AC

Kelvin Range-3000K/5000K

Weight-kg

Dimension-1200 mm

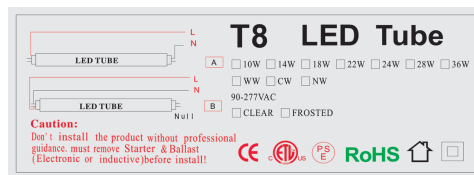
IP Rating-IP40

Certifications-ETL/CE/ROHS/PSE

IES Files-No

Warranty-3 Years

MSRP: \$57.00



EA LED LIGHTING PRODUCTS
709 Frank Street
Hewitt, Texas 76643
V:254-772-8200 F:254-772-8206



Model :EA-LS-SMD2-T8-18W-5-K

Description: 5'-T8-Tube

Wattage-24-Watts

Lumens-2400

CRI-80

Power Factor-95

Beam Angle-120 deg

Lamp Life-30,000 Hours

Heat Sink-Aluminum

Device Cover-Plastic

Socket-G13

Support-Socket

LED-SMD

VAC Rating-90AC/277AC

Kelvin Range-3000K/5000K

Weight-kg

Dimension-1500 mm

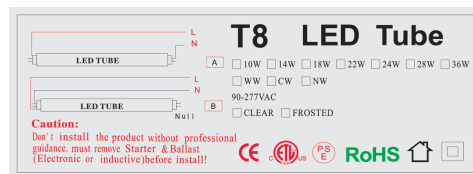
IP Rating-IP40

Certifications-ETL/CE/ROHS/PSE

IES Files-No

Warranty-3 Year

MSRP: \$105.00





Model :EA-LS-SMD2-T8-18W-6-K

Description: 6'-T8-Tube

Wattage-24-Watts

Lumens-2400

CRI-80

Power Factor-95

Beam Angle-120 deg

Lamp Life-30,000 Hours

Heat Sink-Aluminum

Device Cover-Plastic

Socket-G13

Support-Socket

LED-SMD

VAC Rating-90AC/277AC

Kelvin Range-3000K/5000K

Weight-kg

Dimension-1800 mm

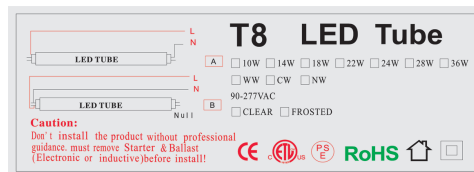
IP Rating-IP40

Certifications-ETL/CE/ROHS/PSE

IES Files-No

Warranty-3 Years

MSRP: \$105.00



EA LED LIGHTING PRODUCTS
709 Frank Street
Hewitt, Texas 76643
V:254-772-8200 F:254-772-8206



Model :EA-LS-SMD1-T8-W-2-K

Description: 2'-T8-Vendo Tube

Wattage- Watts

Lumens-

CRI-80

Power Factor-95

Beam Angle-Degrees

Lamp Life-50,000 Hours

Heat Sink-Aluminum

Device Cover-Plastic

Socket-G13

Support-Socket

LED-SMD

VAC Rating-90AC/277AC

Kelvin Range-3000K/5000K

Weight-kg

Dimension-600 mm

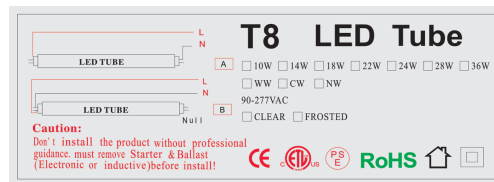
IP Rating-IP65

Certifications-ETL/CE/ROHS/PSE

IES Files-No

Warranty-3 Years

MSRP: \$42.00



EA LED LIGHTING PRODUCTS
 709 Frank Street
 Hewitt, Texas 76643
 V:254-772-8200 F:254-772-8206



Model :EA-LS-SMD1-T8-W-3'-K

Description: 3'-T8-Vendo Tube

Wattage- Watts

Lumens-

CRI-80

Power Factor-95

Beam Angle-120 deg

Lamp Life-30,000 Hours

Heat Sink-Aluminum

Device Cover-Plastic

Socket-G13

Support-Socket

LED-SMD

VAC Rating-90AC/277AC

Kelvin Range-3000K/5000K

Weight-kg

Dimension-900

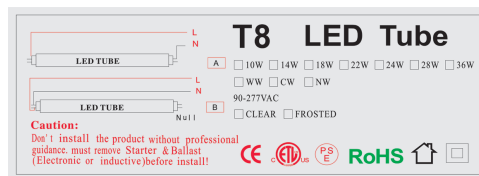
IP Rating-IP

Certifications-ETL/CE/ROHS/PSE

IES Files-No

Warranty-3 Years

MSRP: \$42.00



EA LED LIGHTING PRODUCTS
 709 Frank Street
 Hewitt, Texas 76643
 V:254-772-8200 F:254-772-8206



Model :EA-LS-SMD1-T8-W-4-K

Description: 4'-T8-Vendo Tube

Wattage- Watts

Lumens-

CRI-80

Power Factor-95

Beam Angle-120 deg

Lamp Life-30,000 Hours

Heat Sink-Aluminum

Device Cover-Plastic

Socket-G13

Support-Socket

LED-SMD

VAC Rating-90AC/277AC

Kelvin Range-3000K/5000K

Weight-kg

Dimension-1200 mm

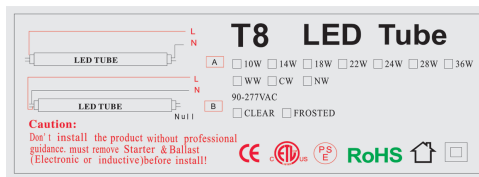
IP Rating-IP40

Certifications-ETL/CE/ROHSPSE

IES Files-No

Warranty-3 years

MSRP: \$48.00



EA LED LIGHTING PRODUCTS
 709 Frank Street
 Hewitt, Texas 76643
 V:254-772-8200 F:254-772-8206



Model :EA-LS-SMD1-T8-W-5-K

Description: 5'-T8-Vendo Tube

Wattage- Watts

Lumens-

CRI-80

Power Factor-95

Beam Angle-120 deg

Lamp Life-30,000 Hours

Heat Sink-Aluminum

Device Cover-Plastic

Socket-G13

Support-Socket

LED-SMD

VAC Rating-90AC/277AC Kelvin

Range-3000K/5000K Weight-kg

Dimension-1500 mm

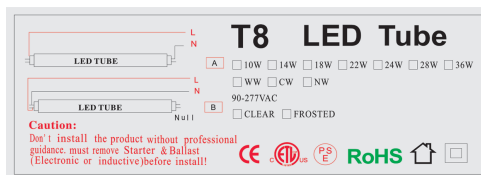
IP Rating-IP40

Certifications-ETL/CE/ROHS/PSE

IES Files-No

Warranty-3 Years

MSRP: \$66.00



EA LED LIGHTING PRODUCTS
 709 Frank Street
 Hewitt, Texas 76643
 V:254-772-8200 F:254-772-8206



Model :EA-LS-SMD1-T8-W-6-K

Description: 6'-T8-Vendo Tube

Wattage- Watts

Lumens-

CRI-80

Power Factor-95

Beam Angle-120 deg

Lamp Life-30,000 Hours

Heat Sink-Aluminum

Device Cover-Plastic

Socket-G13

Support-Socket

LED-SMD

VAC Rating-90AC/277AC

Kelvin Range-3000K/5000K

Weight-kg

Dimension-1800 mm

IP Rating-IP40

Certifications-ETL/CE/ROHS/PSE

IES Files-No

Warranty-3 Years

MSRP: \$66.00



T8 LED Tube

10W
 14W
 18W
 22W
 24W
 28W
 36W

WW
 CW
 NW

90-277VAC

CLEAR
 FROSTED

Caution:
 Don't install the product without professional guidance, must remove Starter & Ballast (Electronic or inductive) before install.



Model :EA-LS-SMD1-T5-W-2'-K

Description: 2'-T5-Tube

Wattage- 10 Watts

Lumens-1500

CRI-80

Power Factor-95

Beam Angle-120 deg

Lamp Life-30,000 Hours

Heat Sink-Aluminum

Device Cover-Plastic

Socket-G5

Support-Socket

LED-SMD

VAC Rating-90AC/277AC

Kelvin Range-3000K/5000K

Weight-kg

Dimension-

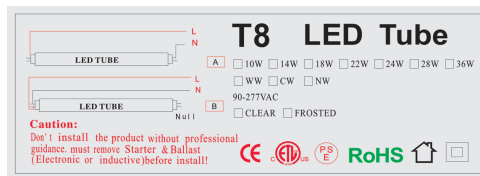
IP Rating-IP40

Certifications-ETL/CE/ROHS/PSE

IES Files-No

Warranty-3 Years

MSRP: \$42.00



EA LED LIGHTING PRODUCTS
709 Frank Street
Hewitt, Texas 76643
V:254-772-8200 F:254-772-8206



Model :EA-LS-SMD1-T5-W-4'-K

Description: 4'-T5-Tube

Wattage- 18 Watts

Lumens-3000

CRI-80

Power Factor-95

Beam Angle-120 deg

Lamp Life-30,000 Hours

Heat Sink- Aluminum

Device Cover-Plastic

Socket-G5

Support-Socket

LED-SMD

VAC Rating-90AC/277AC

Kelvin Range-3000K/5000K

Weight-kg

Dimension-

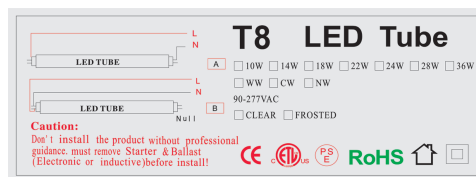
IP Rating-IP40

Certifications-ETL/CE/ROHS/PSE

IES Files-No

Warranty-3 Years

MSRP: \$57.00



EA LED LIGHTING PRODUCTS
 709 Frank Street
 Hewitt, Texas 76643
 V:254-772-8200 F:254-772-8206



Wall Pack Products



Model :EA-LS-SMD-WP-60W-K

Description: Wall Pack

Wattage- 60 Watts

Lumens-5400

CRI-80

Power Factor-95

Beam Angle-130 deg

Lamp Life-30,000 Hours

Heat Sink-Aluminum

Device Cover-Plastic

Socket-Cable

Support-Surface

LED-SMD

VAC Rating-90AC/277AC

Kelvin Range-3000K/5000K

Weight-7 kg

Dimension-363/195/230mm

IP Rating-IP54

Certifications-DLC/ETL/CE/ROHS/PSE

IES Files-No

Warranty-3 Years

MSRP: \$450.00



EA LED LIGHTING PRODUCTS
709 Frank Street
Hewitt, Texas 76643
V:254-772-8200 F:254-772-8206



Model :EA-LS-SMD-WP-100W-K

Description: Wall Pack

Wattage- 100 Watts

Lumens-9000

CRI-80

Power Factor-95

Beam Angle-130 deg

Lamp Life-30,000 Hours

Heat Sink-Aluminum

Device Cover-Plastic

Socket-Cable

Support-Surface

LED-SMD

VAC Rating-90AC/277AC

Kelvin Range-3000K/5000K

Weight-7 kg

Dimension-366/196/226mm

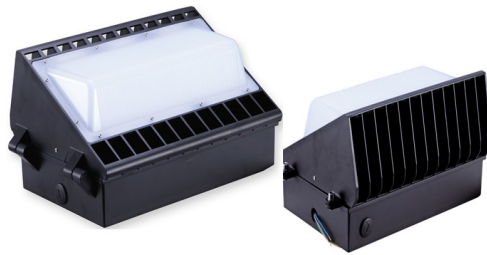
IP Rating-IP65

Certifications-DLC/ETL/CE/ROHS/PSE

IES Files-No

Warranty-3 Years

MSRP: \$450.00





Low Bay Products



Model :EA-MS-LB-60W-K

Description: Low Bay

Wattage- 60 Watts

Lumens-5100

CRI-80

Power Factor-95

Beam Angle-160 deg

Lamp Life-30,000 Hours

Heat Sink-Aluminum

Device Cover-Plastic

Socket-Cable

Support-Eye Bolt / Hub

LED-SMD

VAC Rating-90AC/277AC

Kelvin Range-3000K/5000K

Weight-3kg

Dimension-410/410/320mm

IP Rating-IP54

Certifications-ETL/CE/ROHS/PSE

IES Files-No

Warranty-3 Years

MSRP: \$360.00



EA LED LIGHTING PRODUCTS
709 Frank Street
Hewitt, Texas 76643
V:254-772-8200 F:254-772-8206



Model :EA-MS-LB-90W-K

Description: Low Bay

Wattage- 90 Watts

Lumens-7650

CRI-80

Power Factor-95

Beam Angle-160 deg

Lamp Life-30,000 Hours

Heat Sink-Aluminum

Device Cover-Plastic

Socket-Cable

Support-Eye bolt / Hub

LED-SMD

VAC Rating-90AC/277AC

Kelvin Range-3000K/5000K

Weight-3kg

Dimension-410/410/320mm

IP Rating-IP54

Certifications-ETL/CE/ROHS/PSE

IES Files-No

Warranty-3 Years

MSRP: \$420.00



EA LED LIGHTING PRODUCTS
709 Frank Street
Hewitt, Texas 76643
V:254-772-8200 F:254-772-8206



Model :EA-MS-LB-120W-K

Description: Low Bay

Wattage- 120 Watts

Lumens-10,200

CRI-80

Power Factor-95

Beam Angle-160 deg

Lamp Life-30,000 Hours

Heat Sink-Aluminum

Device Cover-Plastic

Socket-Cable

Support-Cable

LED-SMD

VAC Rating-90AC/277AC

Kelvin Range-3000K/5000K

Weight-3kg

Dimension-410/410/320mm

IP Rating-IP54

Certifications-ETL/CE/ROHS/PSE

IES Files-No

Warranty-3 Years

MSRP: \$468.00



EA LED LIGHTING PRODUCTS
709 Frank Street
Hewitt, Texas 76643
V:254-772-8200 F:254-772-8206



GU10 Lighting Products



Model :EA-LS-COB-GU10-7W-38D-(K)

Description: Spot

Wattage-7 Watts

Lumens-630

CRI-80

Power Factor-95

Beam Angle-38 Degrees

Lamp Life-20,000 Hours

Thermal-Aluminum

Device Cover-Plastic

Socket-GU10

LED-COB

VAC Rating-90AC/277AC

Kelvin Range-3000K/5000K Weight-kg

Dimension-mm

IP Rating-IP40

Certification-ETL/CE/ROHS/PSE IES

Files-No

Warranty-1 Year

MSRP: \$34.20



EA LED LIGHTING PRODUCTS
709 Frank Street
Hewitt, Texas 76643
V:254-772-8200 F:254-772-8206



Model :EA-LS-COB-GU10-5W-60D-K

Description: Spot

Wattage-5 Watts

Lumens-575

CRI-80

Power Factor-95

Beam Angle-60 Degrees

Lamp Life-20,000 Hours

Thermal-Aluminum

Device Cover-Plastic

Socket-GU10

LED-COB

VAC Rating-90AC/277AC

Kelvin Range-3000K/5000K

Weight-kg

Dimension-mm

IP Rating-IP40

Certification-ETL/CE/ROHS/PSE

IES Files-No

Warranty-1 Year

MSRP: \$34.20



EA LED LIGHTING PRODUCTS
709 Frank Street
Hewitt, Texas 76643
V:254-772-8200 F:254-772-8206



MR16 Lighting Products



Model :EA-LS-COB-MR16-5W-38D-K

Description: MR16

Wattage- 5 Watts

Lumens-575

CRI-80

Power Factor-95

Beam Angle-38-Degrees

Lamp Life-10,000 Hours

Thermal-Aluminum

Device Cover-Plastic

Socket-MR16

LED-COB

VDC Rating-12VDC

Kelvin Range-3000K/5000K

Weight-kg

Dimension-mm

IP Rating-IP40

Certification-ETL/CE/ROHS/PSE

IES Files-No

Warranty-1 Year

MSRP: \$15.30



EA LED LIGHTING PRODUCTS
709 Frank Street
Hewitt, Texas 76643
V:254-772-8200 F:254-772-8206



GU24 Lighting Products



Canopy Lighting Products



Model :EA-LS-CP-60W-K

Description: Canopy Light

Wattage- 60 Watts

Lumens-5400

CRI-80

Power Factor-95

Beam Angle-130 deg

Lamp Life-30,000 Hours

Heat Sink-Aluminum

Device Cover-Plastic

Socket-Cable

Support-Surface

LED-SMD

VAC Rating-90AC/277AC

Kelvin Range-3000K/5000K

Weight-kg

Dimension-mm

IP Rating-IP54

Certifications-ETL/CE/ROHS/PSE

IES Files-No

Warranty-3 Years

MSRP: \$450.00





Model :EA-LS-CP-100W-K

Description: Canopy Light

Wattage- 100 Watts

Lumens-9000

CRI-80

Power Factor-95

Beam Angle-160 deg

Lamp Life-30,000 Hours

Heat Sink-Aluminum

Device Cover-Plastic

Socket-Cable

Support-Surface

LED-SMD

VAC Rating-90AC/277AC

Kelvin Range-3000K/5000K

Weight-kg

Dimension-

IP Rating-IP54

Certifications-ETL/CE/ROHS/PSE

IES Files-No

Warranty-3 Years

MSRP: \$675.00



EA LED LIGHTING PRODUCTS
709 Frank Street
Hewitt, Texas 76643
V:254-772-8200 F:254-772-8206



Parking Garage Products



Model :EA-MS-PG-60W-K

Description: Parking Garage

Wattage- 60 Watts

Lumens-5100

CRI-80

Power Factor-95

Beam Angle-160 deg

Lamp Life-30,000 Hours

Heat Sink-Aluminum

Device Cover-Plastic

Socket-Cable

Support-Eye Bolt / Hub

LED-SMD

VAC Rating-90AC/277AC

Kelvin Range-3000K/5000K

Weight-7 kg

Dimension-410/410/320mm

IP Rating-IP54

Certifications-ETL/CE/ROHS/PSE

IES Files-No

Warranty-3 Years

MSRP: \$360.00



EA LED LIGHTING PRODUCTS
709 Frank Street
Hewitt, Texas 76643
V:254-772-8200 F:254-772-8206



Model :EA-MS-PG-90W-K

Description: Parking Garage

Wattage- 90 Watts

Lumens-7650

CRI-80

Power Factor-95

Beam Angle-160 deg

Lamp Life-30,000 Hours

Heat Sink-Aluminum

Device Cover-Plastic

Socket-Cable

Support-Eye Bolt / Hub

LED-SMD

VAC Rating-90AC/277AC

Kelvin Range-3000K/5000K

Weight-7 kg

Dimension-410/410/320mm

IP Rating-IP54

Certifications-ETL/CE/ROHS/PSE

IES Files-No

Warranty-3 Years

MSRP: \$420.00



EA LED LIGHTING PRODUCTS
709 Frank Street
Hewitt, Texas 76643
V:254-772-8200 F:254-772-8206



Model :EA-MS-PG-120W-K

Description: Parking Garage

Wattage- 120 Watts

Lumens-10,600

CRI-80

Power Factor-95

Beam Angle-160 deg

Lamp Life-30,000 Hours

Heat Sink-Aluminum

Device Cover-Plastic

Socket-Cable

Support-Eye Bolt / Hub

LED-SMD

VAC Rating-90AC/277AC

Kelvin Range-3000K/5000K

Weight-7 kg

Dimension-410/410/320mm

IP Rating-IP54

Certifications-ETL/CE/ROHS/PSE

IES Files-No

Warranty-3 Years

MSRP: \$468.00





Parking /Street Light Products



Model :EA-AK-PKL-35W-K

Description: Parking Lighting

Wattage- 35 Watts

Lumens-3325

CRI-75

Power Factor-95

Beam Angle-130 deg

Lamp Life-30,000 Hours

Heat Sink-Aluminum

Device Cover-Plastic

Socket-Cable

Support-Slip Fitter

LED-SMD

VAC Rating-90AC/240AC

Kelvin Range-3000K/5000K

Weight-5.2kg

Dimension-431/316/136mm

IP Rating-IP65

Certifications-ETL/CE/ROHS/PSE

IES Files-No

Warranty-3 Years

MSRP: \$ 305.00





Model :EA-AK-PKL-65W-K

Description: Parking Lighting

Wattage- 65 Watts

Lumens-6175

CRI-75

Power Factor-95

Beam Angle-130 deg

Lamp Life-50,000 Hours

Heat Sink-Aluminum

Device Cover-Plastic

Socket-Cable

Support-Slip Fitter

LED-SMD

VAC Rating-90AC/277AC

Kelvin Range-3000K/5000K

Weight-6.1 kg

Dimension-504/316/136mm

IP Rating-IP65

Certifications-ETL/CE/ROHS/PSE

IES Files-No

Warranty-3 Years

MSRP: \$345.00





Model :EA-AK-PKL-100W-K

Description: Parking Lighting

Wattage- 100 Watts

Lumens-9500

CRI-75

Power Factor-95

Beam Angle-130 deg

Lamp Life-30,000 Hours

Heat Sink-Aluminum

Device Cover-Plastic

Socket-Cable

Support-Slip Fitter

LED-SMD

VAC Rating-90AC/277AC

Kelvin Range-3000K/5000K

Weight-7.3 kg

Dimension-577/316/136mm

IP Rating-IP65

Certifications-ETL/CE/ROHS/PSE

IES Files-No

Warranty-3 Years

MSRP: \$530.00





Model :EA-AK-PKL-165W-K

Description: Parking Lighting

Wattage- 165 Watts

Lumens-15,675

CRI-75

Power Factor-95

Beam Angle-130 deg

Lamp Life-30,000 Hours

Heat Sink-Aluminum

Device Cover-Plastic

Socket-Cable

Support-Slip Fitter

LED-SMD

VAC Rating-90AC/277AC

Kelvin Range-3000K/5000K

Weight-9.0 kg

Dimension-723/316/136mm

IP Rating-IP65

Certifications-ETL/CE/ROHS/PSE

IES Files-No

Warranty-3 Years

MSRP: \$725.00



EA LED LIGHTING PRODUCTS
709 Frank Street
Hewitt, Texas 76643
V:254-772-8200 F:254-772-8206



Model :EA-AK-PKL-200W-K

Description: Parking Lighting

Wattage- 200 Watts

Lumens-19,000

CRI-75

Power Factor-95

Beam Angle-130 deg

Lamp Life-30,000 Hours

Heat Sink-Aluminum

Device Cover-Plastic

Socket-Cable

Support-Slip Fitter

LED-SMD

VAC Rating-90AC/277AC

Kelvin Range-3000K/5000K

Weight-8.5kg

Dimension-796-316-136mm

IP Rating-IP65

Certifications-ETL/CE/ROHS/PSE

IES Files-No

Warranty-3 Years

MSRP: \$835.00





Model :EA-AK-PKL-230W-K

Description: Parking Lighting

Wattage- 230 Watts

Lumens-21,850

CRI-75

Power Factor-95

Beam Angle-130 deg

Lamp Life-30,000 Hours

Heat Sink-Aluminum

Device Cover-Plastic

Socket-Cable

Support-Slip Fitter

LED-SMD

VAC Rating-90AC/277AC

Kelvin Range-3000K/5000K

Weight-10.8 kg

Dimension-869/316/136mm

IP Rating-IP65

Certifications-ETL/CE/ROHS/PSE

IES Files-No

Warranty-3 Years

MSRP: \$895.00





Model :EA-LS-SMD-CH-100W-(K)

Description: Cobrahead

Wattage- 100 Watts

Lumens-9500

CRI-80

Power Factor-95

Beam Angle-130 deg

Lamp Life-50,000 Hours

Heat Sink-Aluminum

Device Cover-Plastic

Socket/Base-Cord

Support-Slip Fitter

LED-CREE SMD

VAC Rating-90AC/277AC

Kelvin Range-3000K/5000K

Weight-5 kg

Dimension-365/316/136

IP Rating-IP65

Certifications-DLC/ETL/CE/ROHS/PSE

IES Files-No

Warranty-3 Years

MSRP: \$420.00



DESIGNLIGHTS®
CONSORTIUM





Shoe Box Lighting Products



Model :EA-LS-SB-80W-K

Description: Shoe Box

Wattage- 80 Watts

Lumens-6000

CRI-80

Power Factor-95

Beam Angle-130 deg

Lamp Life-50,000 Hours

Heat Sink-Aluminum

Device Cover-Plastic

Socket-Cable

Support-Slip Fitter / Bracket

LED-SMD

VAC Rating-90AC/277AC

Kelvin Range-3000K/5000K

Weight-10 kg

Dimension-430/430/180mm

IP Rating-IP65

Certifications-ETL/DLC/CE/ROHS/PSE

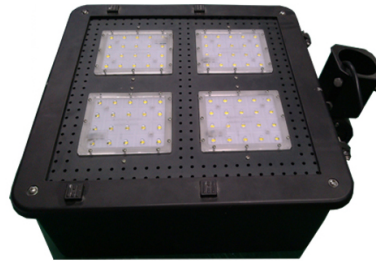
IES Files-No

Warranty-3 Years

MSRP: \$475.00



DESIGNLIGHTS®
CONSORTIUM



EA LED LIGHTING PRODUCTS
709 Frank Street
Hewitt, Texas 76643
V:254-772-8200 F:254-772-8206



Model :EA-LS-SB-120W-K

Description: Shoe Box

Wattage- 120 Watts

Lumens-12,000

CRI-80

Power Factor-95

Beam Angle-130 deg

Lamp Life-50,000 Hours

Heat Sink-Aluminum

Device Cover-Plastic

Socket-Cable

Support-Slip Fitter / Bracket

LED-SMD

VAC Rating-90AC/277AC

Kelvin Range-3000K/5000K

Weight-10 kg

Dimension-430/430/180mm

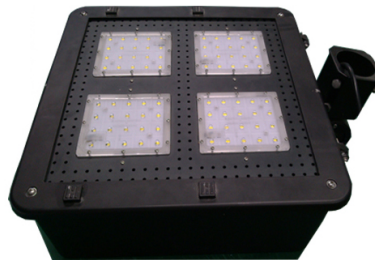
IP Rating-IP65

Certifications-ETL/DLC/CE/ROHS/PSE

IES Files-No

Warranty-3 Years

MSRP: \$712.50



EA LED LIGHTING PRODUCTS
709 Frank Street
Hewitt, Texas 76643
V:254-772-8200 F:254-772-8206



Model :EA-LS-SB-180W-K

Description: Shoe Box

Wattage- 180 Watts

Lumens-18,000

CRI-80

Power Factor-95

Beam Angle-130 deg

Lamp Life-50,000 Hours

Heat Sink-Aluminum

Device Cover-Plastic

Socket-Cable

Support-Slip Fitter / Bracket

LED-SMD

VAC Rating-90AC/277AC

Kelvin Range-3000K/5000K

Weight-10 kg

Dimension-430/430/180mm

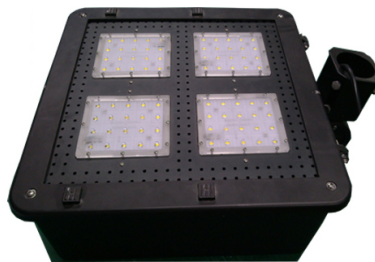
IP Rating-IP65

Certifications-ETL/DLC/CE/ROHS/PSE

IES Files-No

Warranty-3 Years

MSRP: \$1060.75



EA LED LIGHTING PRODUCTS
709 Frank Street
Hewitt, Texas 76643
V:254-772-8200 F:254-772-8206



Par 20 Lighting Products



Model :EA-LS-COB-Par20-5W-38D-(K)

Description: Spot

Wattage-5 Watts

Lumens-575

CRI-80

Power Factor-95

Beam Angle-38 Degrees

Lamp Life-20,000 Hours

Thermal-Aluminum

Device Cover-Plastic

Socket-E26/27

Support-Socket

LED-COB

VAC Rating-90AC/277AC

Kelvin Range-3000K/5000K

Weight-kg

Dimension-mm

IP Rating-IP40

Certification-ETL/CE/ROHS/PSE

IES Files-No

Warranty-1 Year

MSRP: \$17.10



EA LED LIGHTING PRODUCTS
709 Frank Street
Hewitt, Texas 76643
V:254-772-8200 F:254-772-8206



Model :EA-LS-COB-Par20-5W-60D-(K)

Description: Spot

Wattage-5 Watts

Lumens-575

CRI-80

Power Factor-95

Beam Angle-60 Degrees

Lamp Life-20,000 Hours

Thermal-Aluminum

Device Cover-Plastic

Socket-E26/27

Support-Socket

LED-COB

VAC Rating-90AC/277AC

Kelvin Range-3000K/5000K

Weight-kg

Dimension-mm

IP Rating-IP40

Certification-ETL/CE/ROHS/PSE

IES Files-No

Warranty-1 Year

MSRP: \$17.10



EA LED LIGHTING PRODUCTS
709 Frank Street
Hewitt, Texas 76643
V:254-772-8200 F:254-772-8206



Par 30 Lighting Products



Model : EA-LS-COB-Par30-7B-60D-(K)

Description: Par30

Wattage-10 Watts

Lumens-1150

CRI-80

Power Factor-95

Beam Angle-60 deg

Lamp Life-50,000 Hours

Thermal-Aluminum

Device Cover-Plastic

Socket/Base: E26/27

Support-Socket

LED-COB

VAC Rating-90AC/277AC

Kelvin Range-3000K/5000K

Weight-kg

Dimension-mm

IP Rating-IP40

Certification-ETL/CE/ROHS/PSE

IES Files: No

Warranty-1 Years

MSRP: \$57.30



EA LED LIGHTING PRODUCTS
709 Frank Street
Hewitt, Texas 76643
V:254-772-8200 F:254-772-8206



Par 38 Lighting Products



Model :EA-LS-COB-PAR38-38D-(K)

Description: Par 38

Wattage-15 Watts

Lumens-1725

CRI-80

Power Factor-95

Beam Angle-38 Degrees

Lamp Life-20,000 Hours

Thermal-Aluminum

Device Cover-Plastic

Socket-E26-27

Support-Socket

LED-COB

VAC Rating-90AC/277AC

Kelvin Range-3000K/5000K

Weight- kg

Dimension-mm

IP Rating-IP40

Certification-ETL/CE/ROHS/PSE

IES Files-No

Warranty-1 Years

MSRP: \$76.20



EA LED LIGHTING PRODUCTS
709 Frank Street
Hewitt, Texas 76643
V:254-772-8200 F:254-772-8206



Model :EA-LS-COB-PAR38-60D-(K)

Description: Par 38

Wattage-15 Watts

Lumens-1725

CRI-80

Power Factor-95

Beam Angle-60 Degrees

Lamp Life-20,000 Hours

Thermal-Aluminum

Device Cover-Plastic

Socket-E26-27

Support-Socket

LED-COB

VAC Rating-90AC/277AC

Kelvin Range-3000K/5000K

Weight- kg

Dimension-mm

IP Rating-IP40

Certificiaion-ETL/CE/ROHS/PSE

IES Files-No

Warranty-1 Years

MSRP: \$76.20



EA LED LIGHTING PRODUCTS
709 Frank Street
Hewitt, Texas 76643
V:254-772-8200 F:254-772-8206



House Hold Light Products



Model :EA-LS-AL-5W-K

Description: House Hold A Lamp

Wattage- 5 Watts

Lumens-600

CRI-80

Power Factor-95

Beam Angle- 180 deg

Lamp Life-30,000 Hours

Thermal-Aluminum

Device Cover-Plastic

Socket-E26/E27

Support-Socket

LED-COB

VAC Rating-90AC/277AC

Kelvin Range-3000K/5000K

Weight- kg

Dimension-mm

IP Rating-IP40

Certification-ETL/DLC/CE/ROHS/PSE

IES Files-No

Warranty-3 Years

MSRP: \$20.70





Model :EA-LS-AL-8W-K

Description: House Hold A Lamp

Wattage- 8 Watts

Lumens-960

CRI-80

Power Factor-95

Beam Angle- 180 deg

Lamp Life-30,000 Hours

Thermal-Aluminum

Device Cover-Plastic

Socket-E26/E27

Support-Socket

LED-COB

VAC Rating-90AC/277AC

Kelvin Range-3000K/5000K

Weight- kg

Dimension-mm

IP Rating-IP40

Certification-ETL/DLC/CE/ROHS/PSE

IES Files-No

Warranty-3 Years

MSRP: \$23.40





Model :EA-LS-AL-10W-K

Description: House Hold A Lamp

Wattage- 10 Watts

Lumens-1200

CRI-80

Power Factor-95

Beam Angle- 180 deg

Lamp Life-30,000 Hours

Thermal-Aluminum

Device Cover-Plastic

Socket-E26/E27

Support-Socket

LED-COB

VAC Rating-90AC/277AC

Kelvin Range-3000K/5000K

Weight- kg

Dimension-mm

IP Rating-IP40

Certification-ETL/DLC/CE/ROHS/PSE

IES Files-No

Warranty-3 Years

MSRP: \$26.70





Model :EA-LS-AL-12W-K

Description: House Hold A Lamp

Wattage- 12 Watts

Lumens-1440

CRI-80

Power Factor-95

Beam Angle- 180 deg

Lamp Life-30,000 Hours

Thermal-Aluminum

Device Cover-Plastic

Socket-E26/E27

Support-Socket

LED-COB

VAC Rating-90AC/277AC

Kelvin Range-3000K/5000K

Weight- kg

Dimension-mm

IP Rating-IP40

Certification-ETL/DLC/CE/ROHS/PSE

IES Files-No

Warranty-3 Years

MSRP: \$32.04





R-20
Lighting Products



Model :EA-LS-COB-R20-5W-60D-(K)

Description: R-20 Spot

Wattage-5 Watts

Lumens-575

CRI-80

Power Factor-95

Beam Angle-38 Degrees

Lamp Life-20,000 Hours

Thermal-Aluminum

Device Cover-Plastic

Socket-E26/E27

LED-COB

VAC Rating-90AC/277AC

Kelvin Range-3000K/5000K

Weight-kg

Dimension-mm

IP Rating-IP40

Certification-ETL/DLC/CE/ROHS/PSE

IES Files-No

Warranty-1Year

MSRP: \$75.00



EA LED LIGHTING PRODUCTS
709 Frank Street
Hewitt, Texas 76643
V:254-772-8200 F:254-772-8206



R-30
Lighting Products



Model : EA-LS-COB-R30-7B-60D-(K)

Description: R-30 Spot

Wattage-10 Watts

Lumens-1150

CRI-80

Power Factor-95

Beam Angle-60 deg

Lamp Life-30,000 Hours

Thermal-Aluminum

Device Cover-Plastic

Socket/Base: E26/27

LED-COB

VAC Rating-90AC/277AC

Kelvin Range-3000K/5000K

Weight-kg

Dimension-mm

IP Rating-IP40

Certification-ETL/CE/ROHS/PSE IES

Files: No

Warranty-1 Years

MSRP: \$75.00

